

| | | | | | | | |
|------------------|------|----------|------------|--------------|-----------------|------------|-----------------------|
| Engine & Cooling | Fuel | Ignition | Electrical | Running gear | Torque settings | Capacities | Notes & Illustrations |
|------------------|------|----------|------------|--------------|-----------------|------------|-----------------------|



Automotive Technical DATA BOOK

Click on one of the buttons above to view data for this car. To return to this screen and make another choice, click anywhere on the data screen.

MENU

HELP

Engine and cooling system Transporter/Caravelle 2.5i 1994 to 1997

| | | |
|---|-----|-------------------|
| Type | | ACU SOHC 10V 81kW |
| Capacity (cm ³) / number of cylinders | | 2461 / 5 |
| Compression ratio / pressure | bar | 10.0 / ≥7.5 |
| Oil pressure | bar | [2.0] |
| Oil temperature | °C | 80 |
| Valve clearance - inlet | mm | 0: Hyd. |
| Valve clearance - exhaust | mm | 0: Hyd. |
| Firing order | | 1-2-4-5-3 |
| No 1 cylinder position | | TBE |
| Thermostat opening temperature | °C | 87 to 102 |
| Radiator cap pressure | bar | 1.3 to 1.5 |

Fuel system Transporter/Caravelle 2.5i 1994 to 1997

| | | |
|---|-----|--------------------|
| Idle speed - manual [auto] | rpm | 775 to 825 N/A |
| Fast idle speed - manual [auto] | rpm | 2500 to 2800 |
| CO @ idle speed [3000 rpm] - see page VI | % | ≤0.5 [≤0.3] Ex N/A |
| HC @ idle speed [3000 rpm] - see page VI | ppm | ≤200 |
| CO ₂ @ idle speed [3000 rpm] - see page VI | % | - |
| O ₂ @ idle speed [3000 rpm] - see page VI | % | - |
| Carburettor / fuel injection | | Volkswagen |
| Type / ref | | Digifant |
| Main jet / needle | | - |
| Injection pressure | bar | 2.5 |
| Pump pressure | bar | 3.0 |
| Octane rating | RON | 91[U] |

Ignition system Transporter/Caravelle 2.5i 1994 to 1997

| | | |
|--|--------------------|--|
| Type | | Digifant |
| Ignition coil | | - |
| Primary resistance | ohms | 0.5 to 0.7 |
| Ballast resistor | ohms | - |
| Voltage - Tmnl 15(+) to earth | V | - |
| Distributor | | - |
| Points gap (air gap) | mm | - |
| Dwell angle | ° (%) | - |
| Condenser capacity | µF | - |
| Rotation | | - |
| Ignition timing - basic [static V = Vacuum NV = No Vacuum | ° Crankshaft @ rpm | 6±1 BTDC @ 2000 to 2500 ¹ N/A |
| Total ignition advance | ° Crankshaft @ rpm | - |
| Centrifugal check. | ° Crankshaft @ rpm | Computer control |
| Vacuum range check | mbar | Computer control |
| Maximum vacuum advance | ° Crankshaft | - |
| Spark plugs | | Bosch/Champion |
| Type | | W8DTC / N9BMC |
| Electrode gap | mm | 0.70 to 0.90 / ≤0.60 |

Electrical system Transporter/Caravelle 2.5i 1994 to 1997

| | | |
|---|-------------|------------------------|
| Battery | V / CC / RC | 12 / 220 / 44, 60Ah |
| Alternator voltage / full load current / engine rpm | | - / 70, 90, 120 / 3000 |
| Starter motor current / voltage - cranking | A / V | - |
| - locked | A / V | - |

Running gear Transporter/Caravelle 2.5i 1994 to 1997

| | | |
|---|--------|--------------------------------------|
| Brakes - | | |
| Front (min. friction material thickness) | mm | 2.0 |
| Rear (min. friction material thickness) | mm | 1.0 |
| Tyres | | |
| Saloon | Size | - |
| Estate / Van | Size | 195/70x15:205/65x15:215/65x15 |
| Pressure - front / rear - Saloon | bar | - |
| - Estate / Van | bar | 2.6 / 3.4, 215/65: 2.4 / 3.0 |
| Front suspension / wheel alignment | | |
| Toe-in (+) / Toe-out (-) | mm [°] | Group 1 & 2: [+20'±20'] ² |
| Camber | | Group 1 & 2: +15'±20' ³ |
| Castor | | +1°40'±30'. Group 4: 1°50'±30' |
| King pin inclination | | - |
| Rear suspension / wheel alignment | | |
| Toe-in (+) / Toe-out (-) | mm [°] | Group 1 & 3: [+20'±20'] ⁴ |
| Camber | | Group 1 & 3: -30'±30' ⁵ |

Torque wrench settings Transporter/Caravelle 2.5i 1994 to 1997

| | | |
|-------------------------|----|-----------------|
| Cylinder head - stage 1 | Nm | 40 |
| - stage 2 | Nm | 60 |
| Cylinder head - stage 3 | Nm | + 90° |
| - stage 4 | Nm | + 90° |
| Big-end bearings | Nm | 30 + 90° |
| Main bearings | Nm | 65 ⁶ |
| Clutch cover | Nm | 20 |
| Flywheel [driveplate] | Nm | 60 + 90° N |
| Front hubs | Nm | 150 + 90° N |
| Rear hubs | Nm | 200 |
| Wheel nuts / bolts | Nm | 160 |
| Spark plugs | Nm | 30 |

Capacities Transporter/Caravelle 2.5i 1994 to 1997

| | | |
|---------------------------------|--------|------------------------|
| Engine oil & filter | litres | 5.5 |
| Gearbox - 4-speed [5-speed] | litres | 3.0 02B: 2.5 |
| Automatic transmission - refill | litres | 3.5 |
| Final drive | litres | WT. AT: 1.15. 4x4: 1.0 |
| Cooling system | litres | 9.0 |
| Fuel tank | litres | 80 |

Notes and Illustrations

¹Coolant temperature sender plug blue 2 pin disconnected

²Group 3: [+10'±20']. Group 4: [0±20']

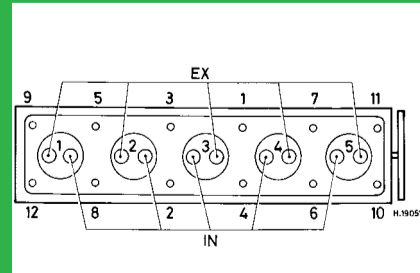
³Group 3: 0±20'. Group 4: -10'±20'

⁴Group 2: +6'±20'. Group 4: +24'±20'

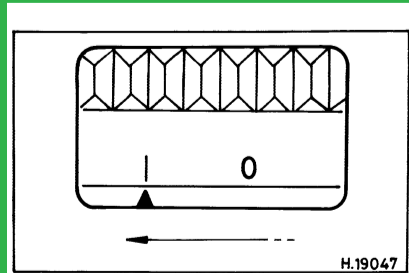
⁵Group 2: 0±30'. Group 4: -40'±30'

⁶Replace with fully threaded shank bolts: 65 + 90°

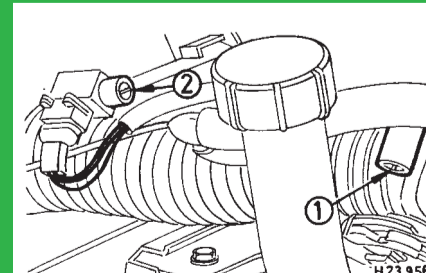
1: Idle speed 2: CO / Mixture



2461 cm³



2461 cm³



Digifant, ACU