

Sliding door

Assembly overview from 04.01

1 - Window border

- ◆ is damaged when removed

2 - Rubber buffer

3 - Sliding door window

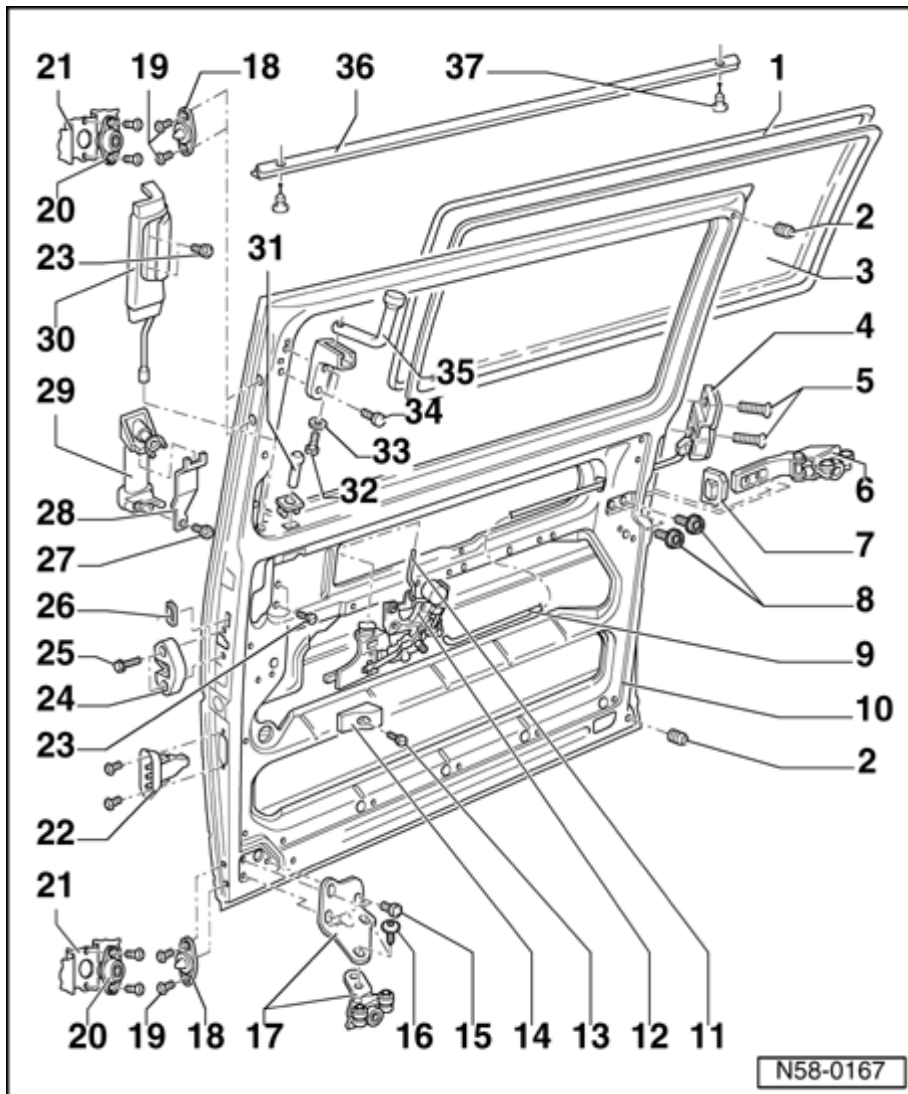
- ◆ adhered (positive engagement): removing and installing ⇒ page 64-8
- ◆ Special equipment, sliding window: servicing ⇒ page 64-32

4 - Central lock

- ◆ removing ⇒ page 58-24

5 - Bolt

- ◆ 19 Nm



6 - Hinge armature

7 - Seal

8 - Bolt

◆ Qty. 2

◆ 54 Nm

9 - Latch actuator rod

◆ Connection from remote control to central lock

10 - Sliding door

◆ removing ⇒ [Page 58-17](#)

◆ adjusting ⇒ [Page 58-32](#)

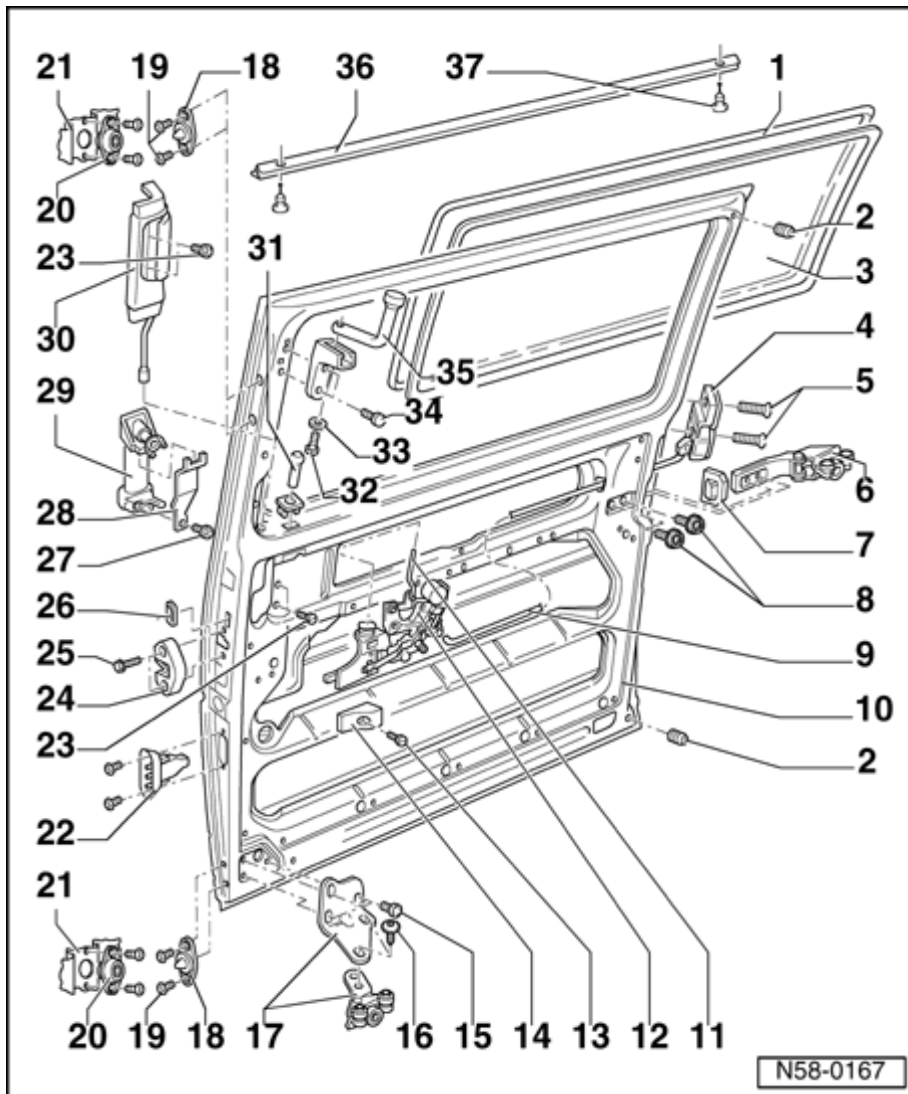
11 - Locking rod

12 - Remote control

13 - Bolt

◆ 19 Nm

14 - Center stop



15 - Bolt

◆ 19 Nm

16 - Bolt

◆ 19 Nm

17 - Lower roller guide

18 - Latch pin

◆ adjusting ⇒ [Page 58-36](#)

19 - Bolt

◆ 19 Nm

20 - Catch plate

21 - B-pillar

22 - Right Rear Side/Sliding Door Contact Switch -F7-

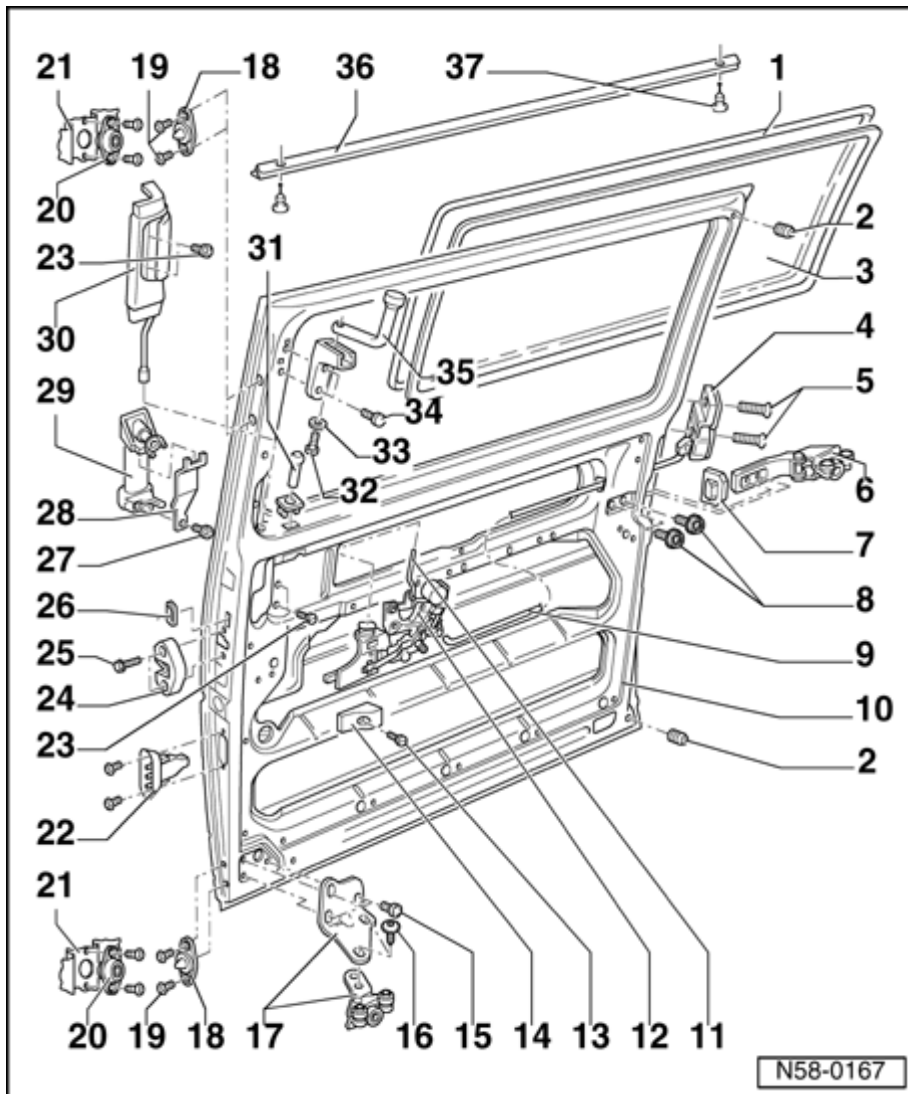
23 - Bolt

◆ 8 Nm

24 - Catch plate

25 - Bolt

◆ 19 Nm



26 - Collar

27 - Bolt

◆ 19 Nm

28 - Tension spring

29 - Outside door handle

◆ removing ⇒ page 58-25

30 - Inside door handle

31 - Lock knob

◆ threaded onto pull rod

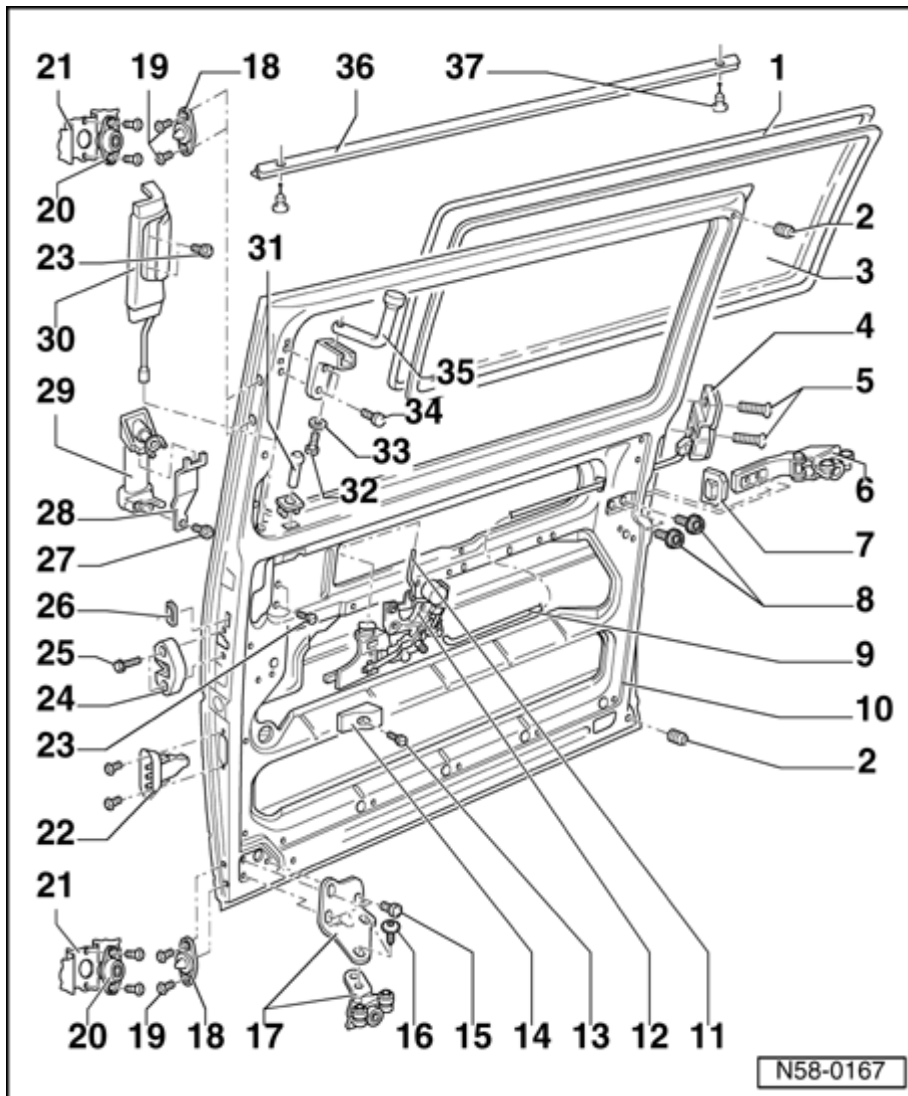
32 - Bolt

◆ 12 Nm

33 - Washer

34 - Bolt

◆ 12 Nm



35 - Upper roller guide

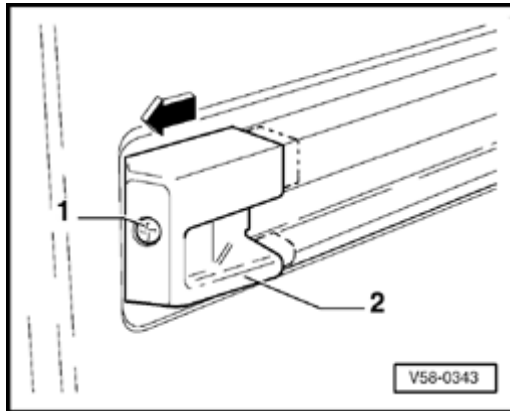
36 - Seal profile

◆ clipped in and adhered

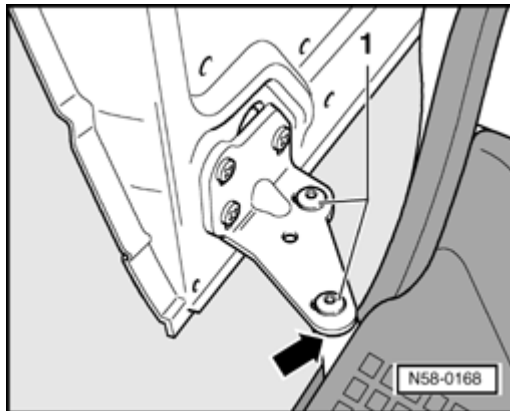
37 - Clip



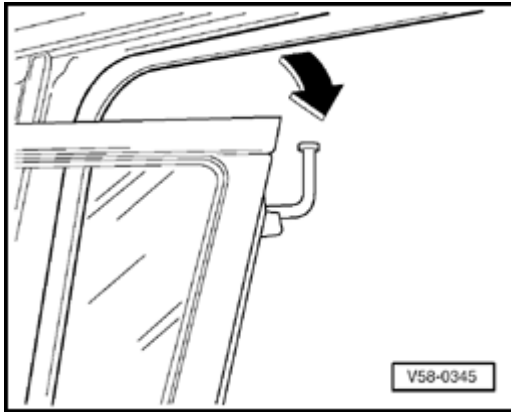
Sliding door, removing from 04.01



- A
- Remove screw -1- and pull off end piece -2- from guide rail.

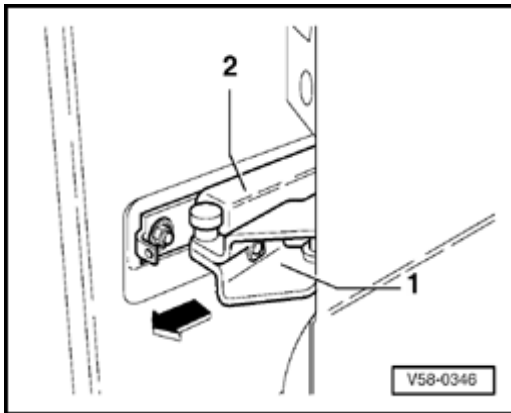


- A
- Mark adjustment of lower roller guide -arrow-.
 - Remove bolts -1-



A

- Lower sliding door far enough at front, so that the upper roller guide can be removed from the guide channel.



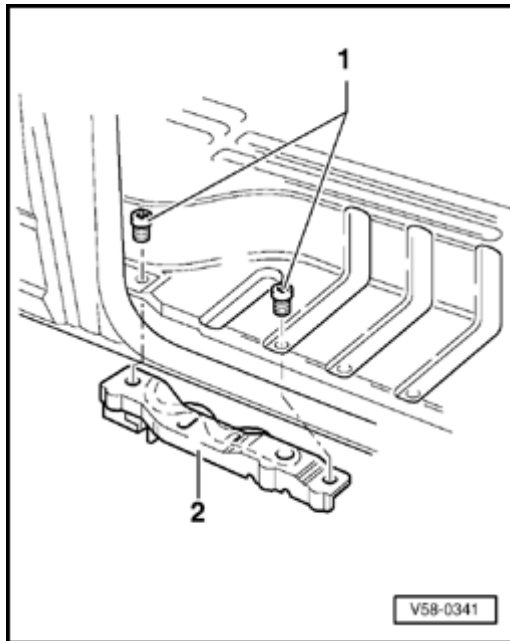
A

- With help from a second technician, guide sliding door back until hinge armature -1- slides out of guide rail -2-.



Door stop, removing

- If applicable, remove door step insert and Foot well Light with Delay Switch -W23-, ⇒ [Page 58-22](#) .
- Place sliding door in half-opened position.

**A**

- Remove screws -1- and pull door stop -2- downward out of guide channel.

Tightening torque:

19 Nm (14 ft lb)



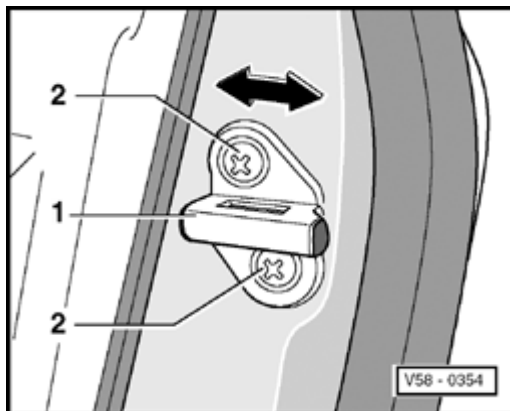
Sliding door, adjusting (up to 12.95)

Sliding door adjusting (from 01.96) ⇒ [Page 58-25](#)

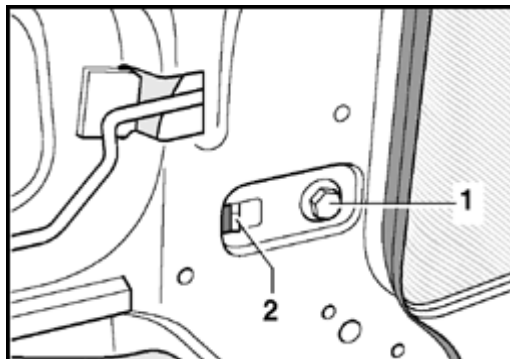
- Remove sliding door molded trim and/or sliding door lower trim

⇒ [Repair Manual, Body Interior, Repair Group 70](#)

Hinge link, adjusting



- A** - Loosen striker -1- by loosening screws -2-.



- A** - Close sliding door and loosen bolt -1- from inside vehicle.
- Have a second technician lift sliding door, push hinge fitting with hex bolts -1- and guide tab -2- as far forward as possible.
- Tighten hex bolt -1-.

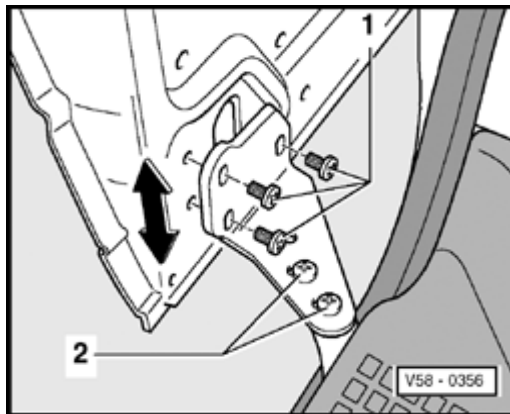
Tightening torque:

Bolt -1- = 58 Nm (43 ft lb)



Lower roller guide, adjusting

- Front Height of sliding door incorrect
- Sliding door does not match B-pillar outer contour



A

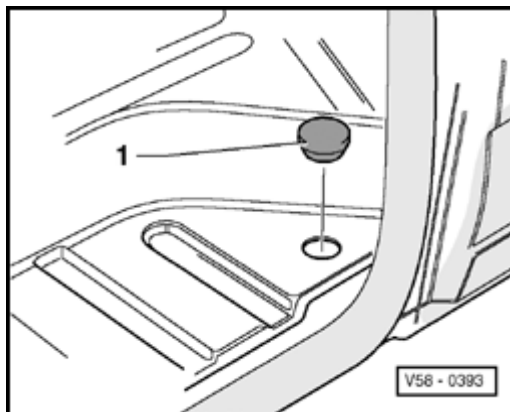
- If sliding door height is incorrect, loosen screws -1-, align sliding door as required - arrow-.

Tightening torque:

Screw -1- = 19 Nm (14 ft lb)

If sliding door does not match B-pillar outer contour adjust with Phillips screws -2- as follows:

Vehicles without door step insert

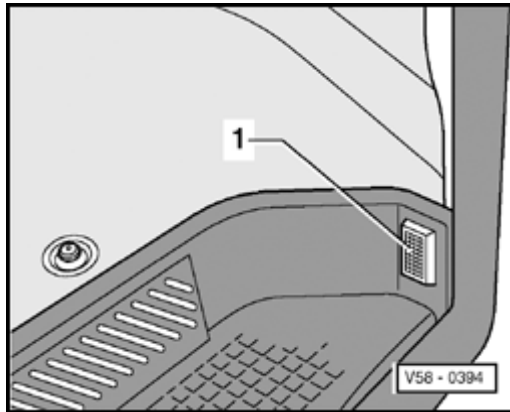


A

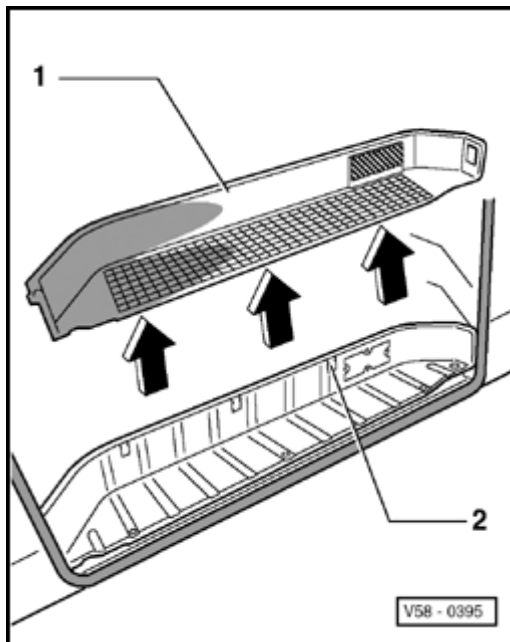
- Press plastic cap -1- out of step from below.



Vehicles with Foot well Light with Delay Switch -W23-



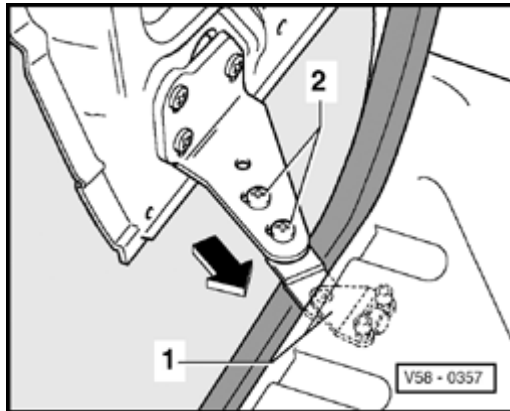
- A
- If applicable, pry out Foot well Light with Delay Switch -W23- -1- and disconnect connectors.



- A
- Unclip door step insert -1- from outside -arrows-, installation position, lift upward out of clips -2-.



Continued, all vehicles



A

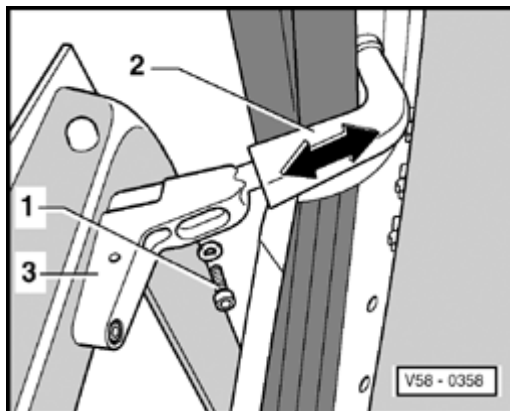
- Loosen Phillips screws -2-, press sliding door against roller guide -1- -arrow-, tighten only screw -2- on door side.
- Close sliding door carefully.
- Loosen screw -2- carefully while second technician outside indicates when sliding door is flush with B-pillar.
- Tighten both screws -2-.

Tightening torque:

Screws -2- = 19 Nm (14 ft lb).

Upper roller guide, adjusting

- Top front of sliding door does not match outer B-pillar contour.



A

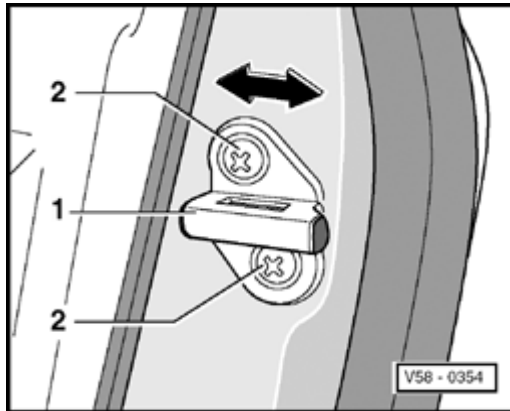
- Loosen bolt -1- and slide upper roller guide -2- on bracket -3- -arrows- until top front of sliding door matches outer B-pillar contour.

Tightening torque:

Bolt -1- 8 Nm (71 in. lb).



Striker, adjusting

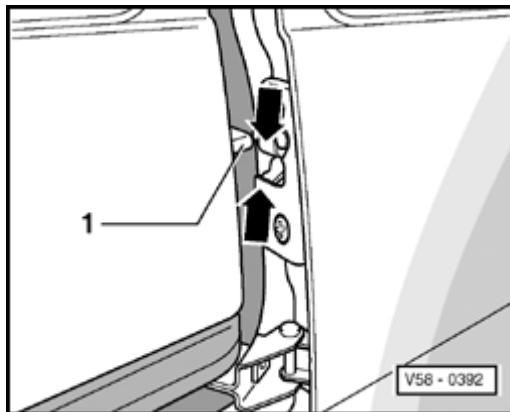


A

- Striker -1- can move horizontally -arrow- after loosening Phillips screw -2-.

Tightening torque:

Screws -2- = 19 Nm (14 ft lb)



A

- Adjust striker -1- so recess on remote control with turn clip is concentric -arrows- to striker (door must not be raised or pressed down).

- Sliding door must have no free play when closed.



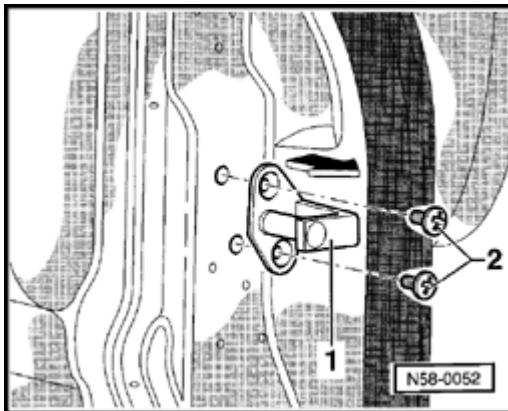
Sliding door, adjusting (from 01.96)

Sliding door, adjusting (up to 12.95) ⇒ [Page 58-20](#)

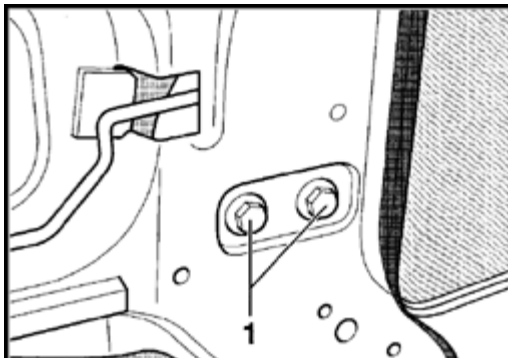
- Remove sliding door molded trim and/or remove lower door trim.

⇒ [Repair Manual, Body Interior, Repair Group 70](#)

Hinge, adjusting



- A - Loosen latch striker -1- by loosening phillips screws -2-.



- A - Close sliding door, loosen hex bolts -1- from inside vehicle.
- Have second technician lift sliding door and push hinge as far forward as possible.
- Tighten hex bolts -1-.

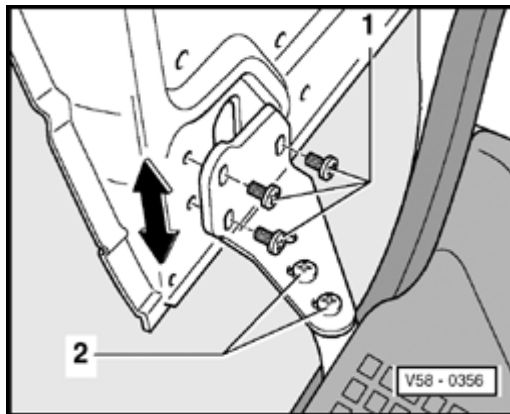
Tightening torque:

Bolt -1- = 58 Nm (43 ft lb)



Lower roller guide, adjusting

- ◆ Sliding door height not correct
- ◆ Sliding door outer contour does not match B-pillar



A

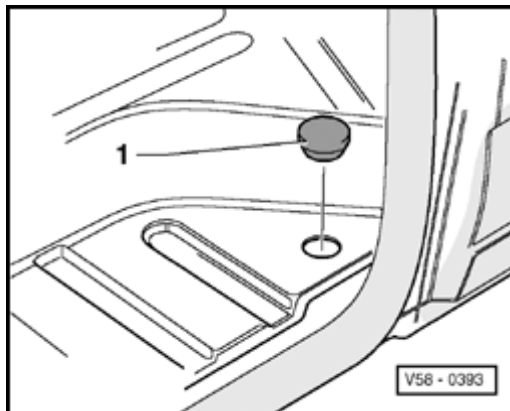
- To adjust height, loosen Phillips screws -1- and align accordingly -arrow-.

Tightening torque:

Phillips screw -1- = 19 Nm (14 ft lb)

If sliding door contour does not match B-pillar, make adjustments with Phillips screws -2- as follows:

Vehicles without step insert



A

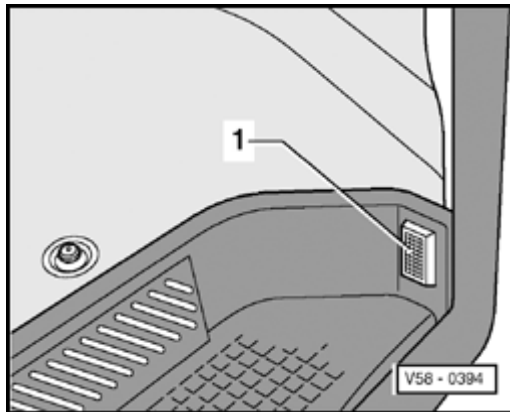
- Press plastic cap -1- out of step from below.

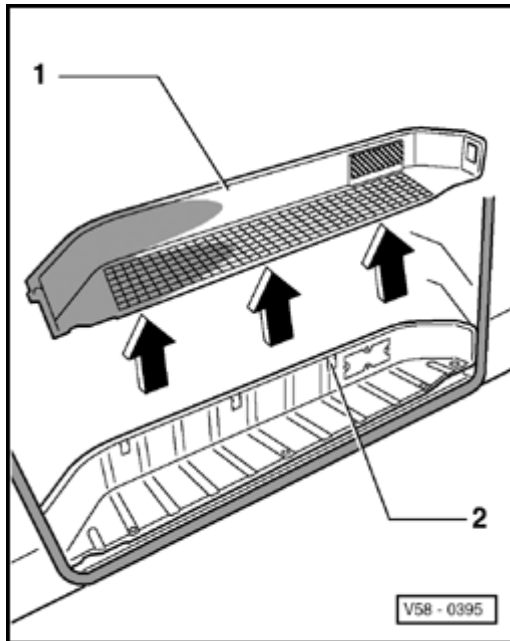


Vehicles with step insert

A

- Pry step light -W23- -1- out, if applicable, disconnect connector.



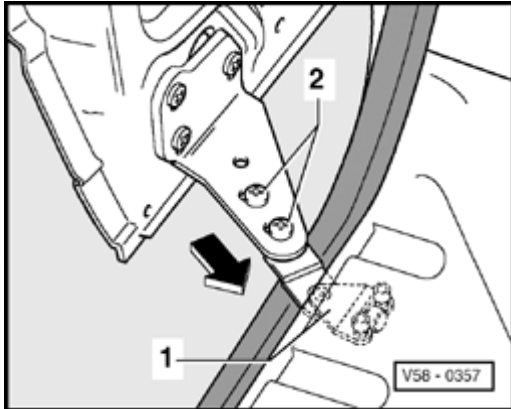


- A
- Unclip step trim -1- at outside -arrows-, lift up out of clips -2-.



Continued, all vehicles

With help of second technician



A

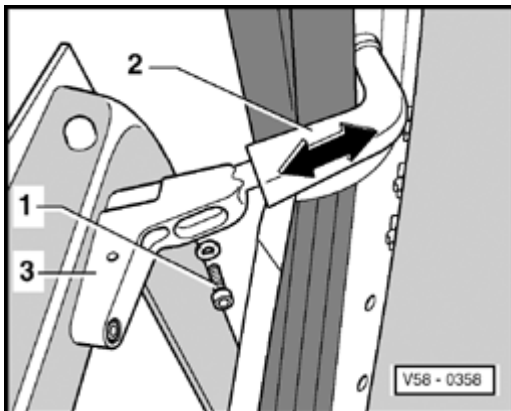
- Loosen Phillips screws -2-, press sliding door against roller guide -1- -arrow-, tighten one screw -2- next to door.
- Carefully close door.
- Loosen screw -2- enough to adjust contour with outer B-pillar, then tighten both screws -2-.

Tightening torque:

19 Nm (14 ft lb)

Upper roller guide, adjusting

- ◆ Sliding door top front does not match B-pillar contour

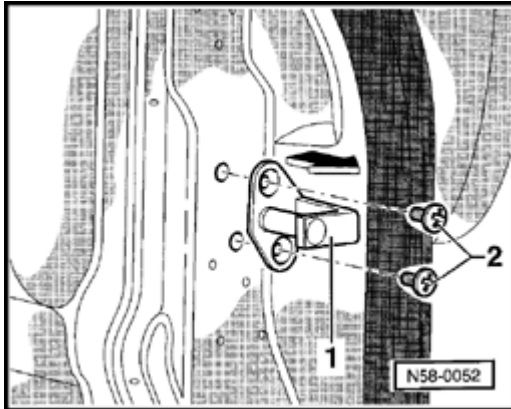


A

- Loosen hex recess bolt -1-, slide upper roller guide -2- on bracket -3- -arrows- until top front of sliding door matches outer B-pillar contour. Tightening torque: Recessed bolt -1- = 8 Nm (71 in. lb).



Latch striker, adjusting

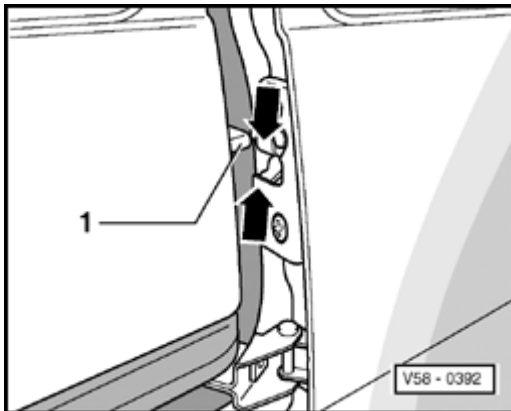


A

- Loosen Phillips screws -2-, striker can now slide horizontally -arrow-.

Tightening torque:

Screws -2- = 19 Nm (14 ft lb)



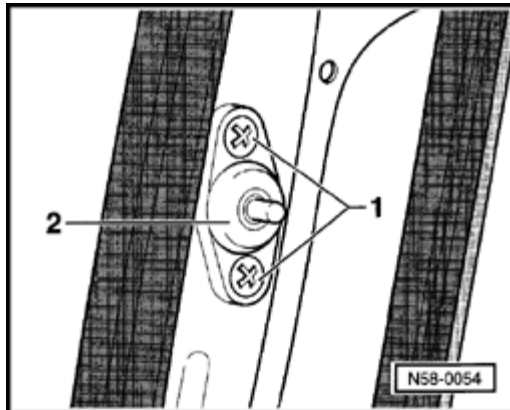
A

- Adjust latch striker -1- so recess on central lock engages with catch in center of striker - arrow- (door must not be raised or pressed).
- Door must have no free play when closed.



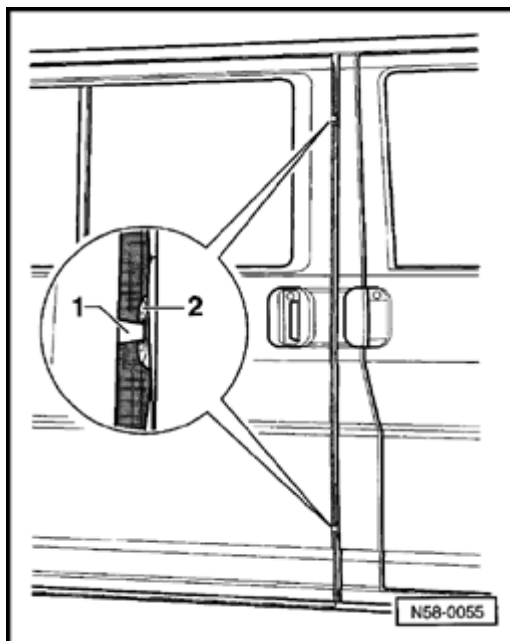
Latch pin, adjusting

- ◆ Latch pin must face inside of vehicle, when installing



A

- Loosen screws -1- enough to move latch pin -2-.



A

- Close door slowly and check latch pin -1- position to catch plates -2-, latch pins must be parallel to catch plates.
- Close door completely to confirm adjustment.
- Open door and tighten screws.

Tightening torque:

Screws -1- = 19 Nm (14 ft lb)



Adjusting sliding door from 04.01

- Remove roller guide trim; front frame trim and cover for sliding door adjustment.

⇒ [Repair Manual, Body Interior; Repair Group 70; Door trim, sliding door form trim - assembly overview](#)

Closing force reduction, adjusting

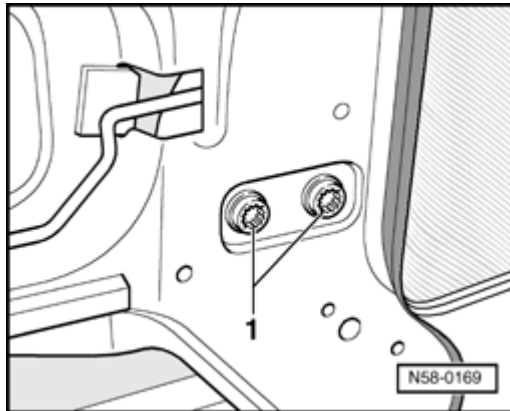
- There must be a distance of approx. 1 to 2 mm between catch plate (⇒pos. 24 , ⇒ [Page 58-14](#)) and B-pillar pressure plate in closed condition (visual check).

If this is not the case, all listed work steps must be performed in the following sequence:

- Adjust hinge armature ⇒ [Page 58-33](#) .
- Adjust lower roller guide ⇒ [Page 58-33](#) .
- Adjust upper roller guide ⇒ [Page 58-34](#) .
- Adjust latch striker ⇒ [Page 58-35](#) .
- Adjust latch pin ⇒ [Page 58-36](#) .
- Adjust rubber buffer ⇒ [Page 58-37](#) .



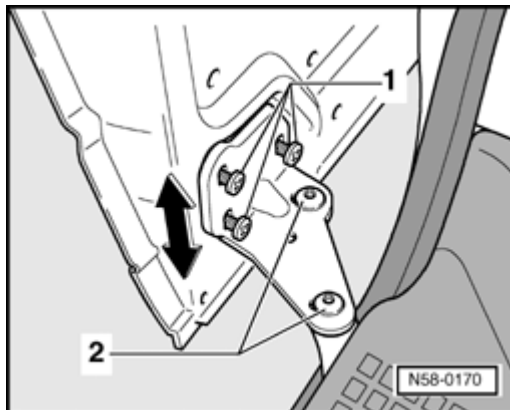
Hinge armature, adjusting



A

- Close sliding door and loosen bolts -1- from vehicle interior.
 - Have a second technician lift sliding door and slide hinge armature with bolts as far forward as possible.
 - Tighten bolts -1-.
- Tightening torque: Bolt -1- = 54 Nm

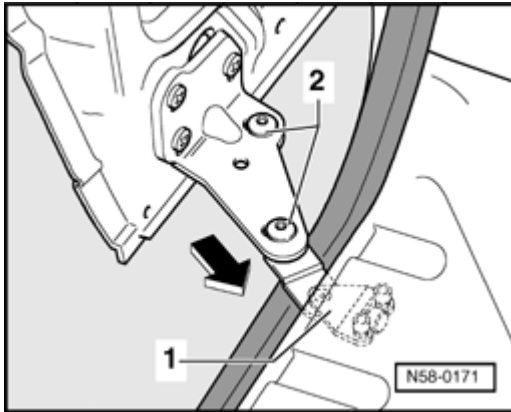
Lower roller guide, adjusting



A

- Sliding door height at front is not correct
 - Sliding door is not flush with outside contour of B-pillar
- Remove latch pin on sliding door-side.
- If the height adjustment of the sliding door is not correct, loosen bolts -1- and adjust sliding door respectively -arrow-.
- Tightening torque: Bolt -1- = 19 Nm

If the front of the sliding door is not flush with the outside contour of the B-pillar, the adjustment must be performed via bolts -2- as follows:



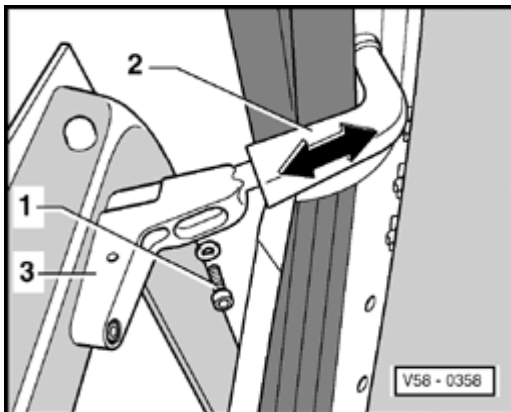
A

- Loosen bolts -2-, adjust sliding door to roller guide -1- -arrow- and pre-tighten both bolts slightly.
- Carefully close sliding door and check seating of sliding door from outside. If necessary, repeat procedure until the sliding door is flush with the outer contour of the B-pillar.
- Carefully open sliding door and tighten both bolts -2-.

Tightening torque: Bolts -2- = 19 Nm

Upper roller guide, adjusting

- Top front of sliding door is not flush with the outer contour of the B-pillar



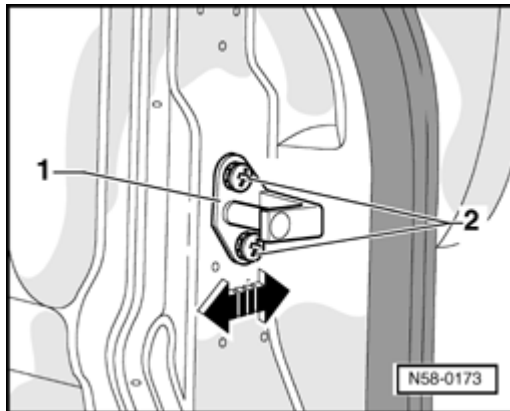
A

- Loosen bolt -1- and then slide upper roller guide -2- on bracket -3- to adjust -arrows-, until top front of sliding door is flush with the outer contour of B-pillar.

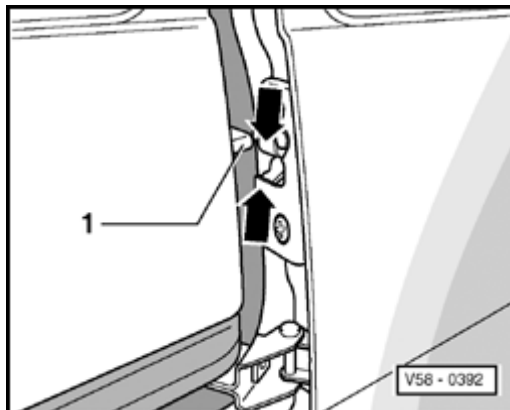
Tightening torque: Bolt -1- = 8 Nm



Latch striker, adjusting



- Latch striker -1- can be adjusted horizontally -arrow- after loosening bolts -2-.
- Tightening torque: Bolts -2- = 19 Nm

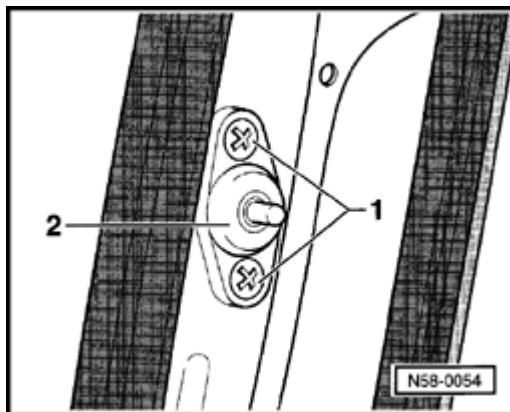


- Adjust latch striker -1- so that the cutout of the central lock with lock mechanism engages centrally in latch striker -arrows- (do not lift up or press down on door). Sliding door must project out approx. 1 to 2 mm and not have any play in closed condition to C-pillar (wind noise).



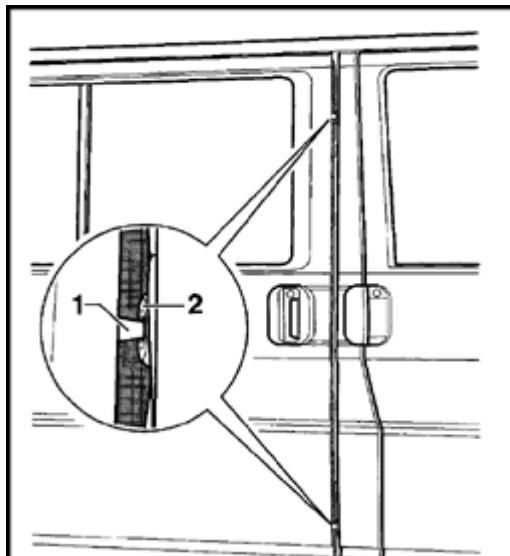
Latch pin, adjusting

- Install latch pin on sliding door-side.
- When installing, make sure the points of latch pin point toward the vehicle interior.



A

- Loosen bolts -1- until latch pin -2- can be moved.



A

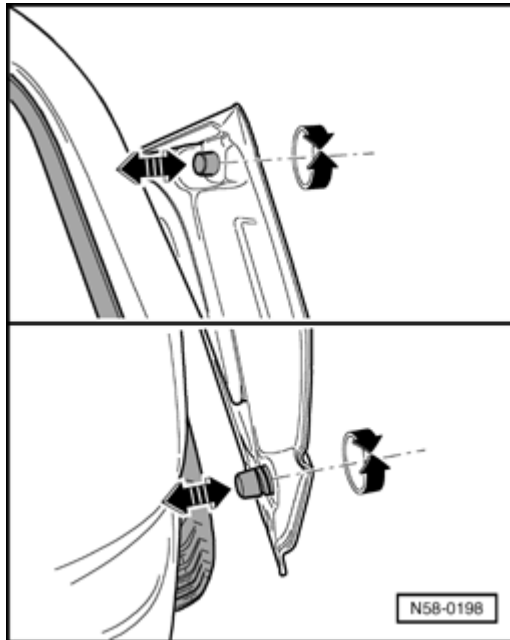
- Slowly close sliding door and check position of latch pin -1- to catch plates -2- - latch pins must be parallel to the catch plates -.
 - Close sliding door completely, therefore adjusting the latch pins.
 - Open sliding door and tighten screws
- Tightening torque: Screws -1- = 19 Nm.
- Carefully close sliding door once again to check whether the latch pins run into the catch plates in a centered manner.



Rubber buffers, adjusting

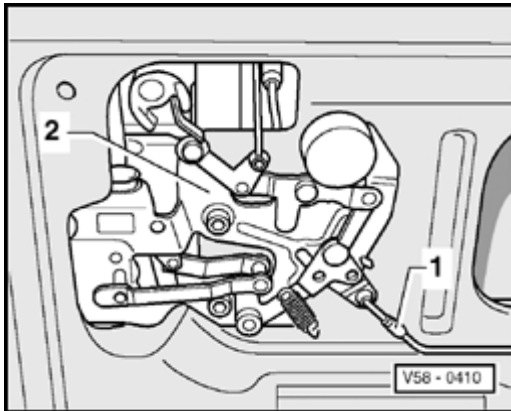
A

- Rubber buffers at rear top and bottom of sliding door must be adjusted by threading in or out so that they make light contact.
- Do not use the rubber buffers to adjust the sliding door.

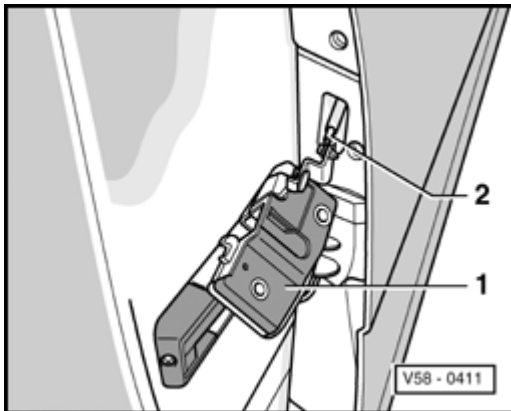




Remote control lock, removing

**A**

- Remove sliding door trim and/or remove lower sliding door trim
⇒ [Repair Manual, Body Interior, Repair Group 70.](#)
- Disconnect pull rod -1- from remote control lock -2-.

**A**

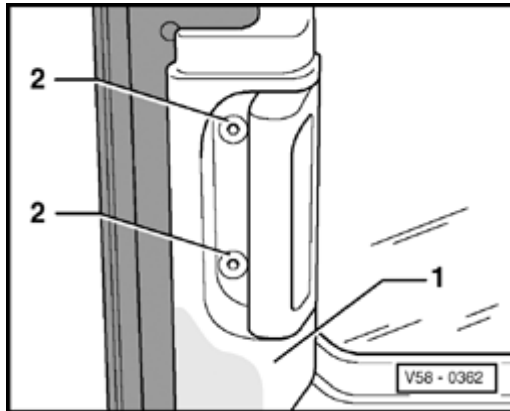
- Remove remote control lock -1- by removing screws and disconnecting pull rod -2- at remote control.

Tightening torque:

Screw = 19 Nm (14 ft lb).

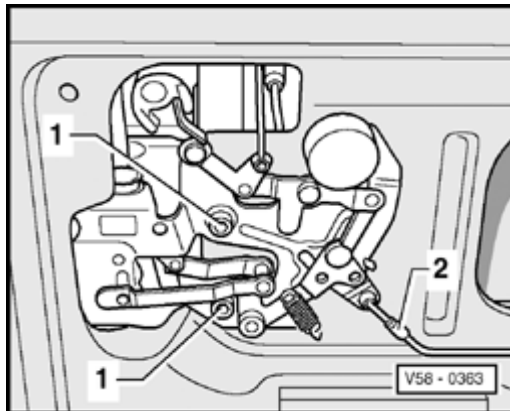


Outside door handle, removing



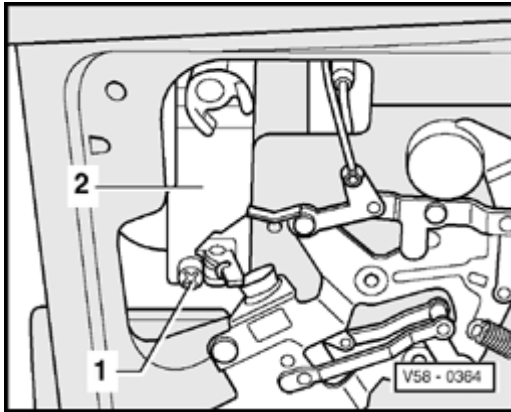
A

- Remove sliding door trim and/or remove lower sliding door trim.
⇒ [Repair Manual, Body Interior, Repair Group 70](#)
- Loosen inner mechanism by removing bolts -2-, remove by pulling up.



A

- Remove Bolts and disconnect pull rod -2-. Push remote control to one side.
Tightening torque:
Bolts -1- = 8 Nm (71 in. lb)

**A**

- Remove screw -1- and disconnect tension spring -2-.

Tightening torque:

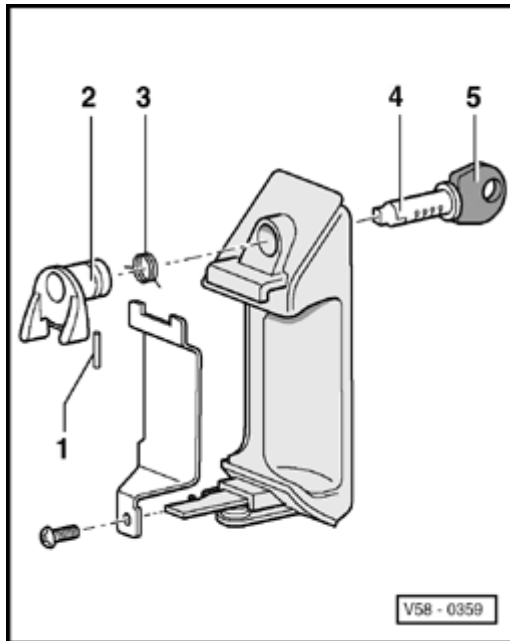
Screw -1- = 19 nm (14 ft lb)

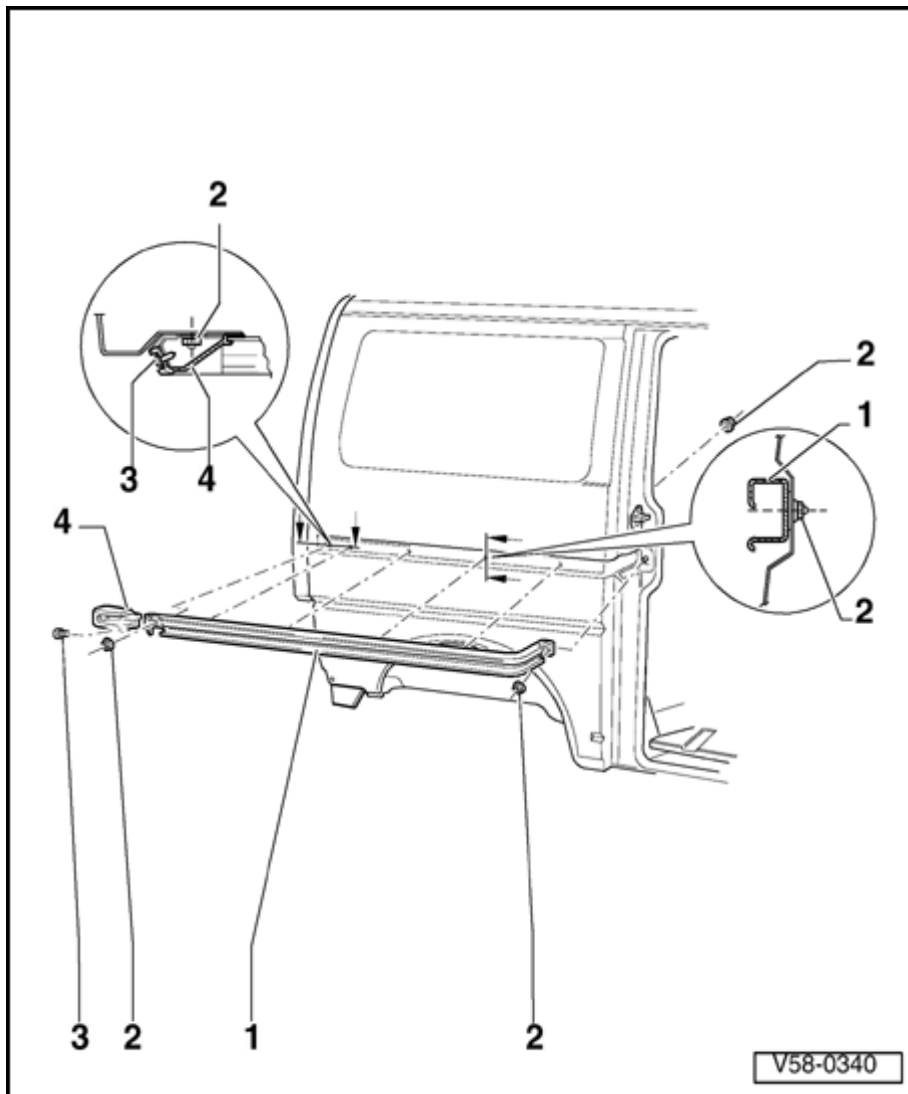


Lock cylinder, removing (sliding door)

A

- Remove sliding door trim and/or remove lower sliding door trim.
⇒ [Repair Manual, Body Interior, Repair Group 70.](#)
- Remove outer door handle ⇒ [Page 58-39](#) .
- Remove spring pin -1-.
- Remove casting -2- off four-sided shaft.
- Remove outer spring -3-.
- Remove lock cylinder -4- with key -5- inserted.





Guide rail, assembly overview

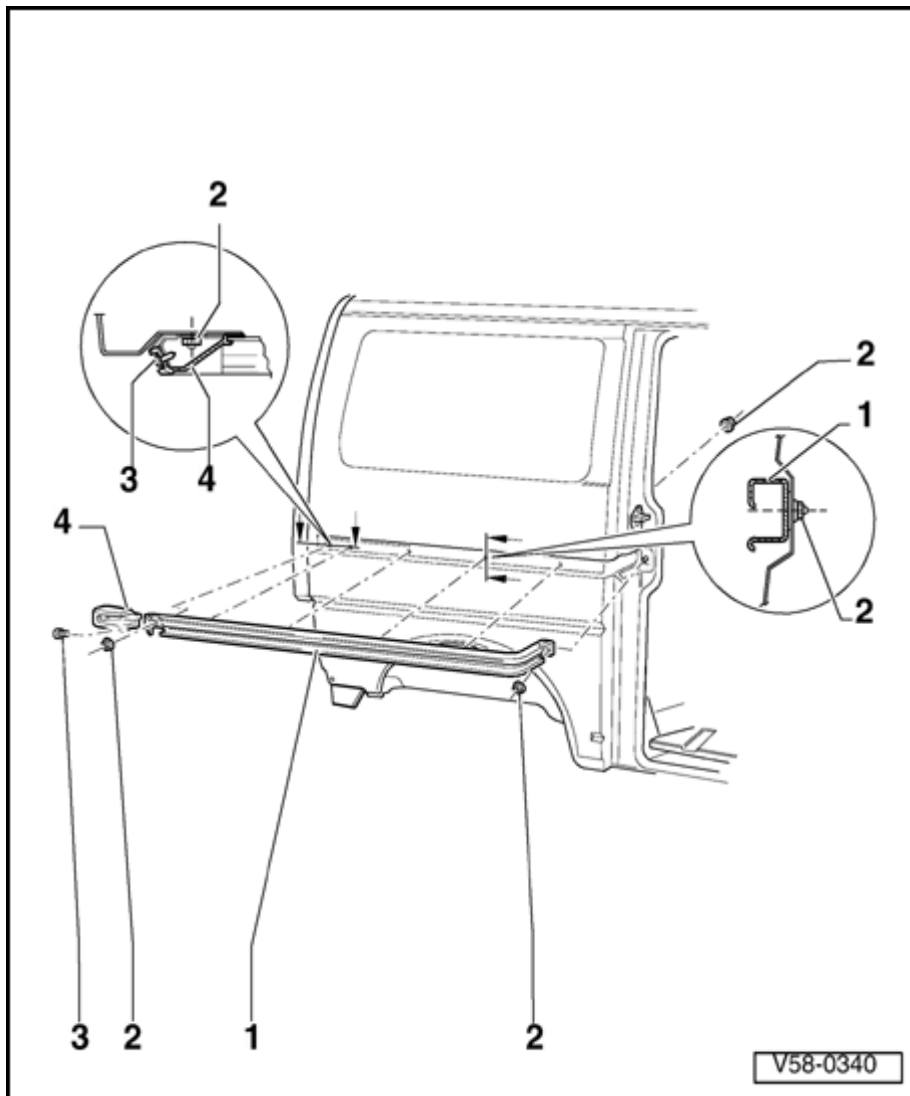
Note:

To remove guide rail: remove sliding door ⇒ [Page 58-10](#) , if necessary, molded trim on right rear side panel

⇒ [Repair Manual, Body Interior, Repair Group 70](#)

1 - Guide rail

- ◆ Removing: Remove end piece -4-, loosen hex nuts -2-



2 - Hex nuts

◆ 8 Nm (71 in. lb)

3 - Phillips screws

4 - End piece