



## Multivan/Caravelle

### Quick Reference Guide

#### Dear Driver,

We are happy to welcome you as a new Multivan/ Caravelle driver.

Our Quick Reference Guide is intended to give you an overview of the important controls and functions of your vehicle.

This Quick Reference Guide does not, however, describe all of the functions. It cannot replace the vehicle wallet and the many important explanations and warnings that it contains.

We wish you safe, reliable and enjoyable motoring.

Volkswagen AG



#### Adjusting front seats



#### 1 Head restraints

Adjust restraint up or down in direction of arrows.

#### 4 Angle of backrest

Take weight off backrest and turn handwheel.

#### 2 Angle of arm rest

Adjust angle with knurled knob. Armrests can be hinged up.

#### 5 Moving seat backwards and forwards

Lift lever, move seat.

#### 3 Lumbar support

Take weight off backrest and turn handwheel.

#### 6 Further adjustment backwards and forwards

(for work on additional battery)  
Pull up lever 5 and push seat forwards onto stop. Swing up lever 6, keep hold and push the seat over the stop further forward.

#### Locking system

If you operate the central system at the front doors, all doors and the tailgate (if the lock is in a horizontal position) are either locked or unlocked.

Lock for front left door/  
right sliding door



- 1 - unlock
- 2 - lock

Lock for front right door/  
left sliding door/ wing door



- 1 - unlock
- 2 - lock

Tailgate lock

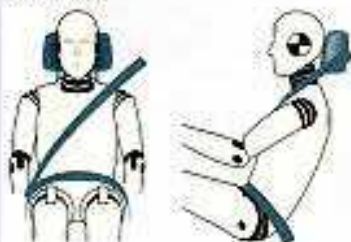


Lock cylinder positions:

- 1 - lock/ unlock via central locking
- 2 - permanently locked via key
- 3 - unlock using key

## Safety

All vehicle occupants, including those on the rear seats, must put on their seat belts before every journey - even when driving in town traffic. For the best possible protection by the seat belts and Airbags: Do not position seats too close to the steering wheel or the dash panel, keep the seats in an upright position, ensure that the belts are fitted properly, keep your feet in the footwell at all times.



### Seat belt position/ head restraint position

The shoulder belt must run over the middle of the shoulder, the lap belt must fit across the pelvis. The belts must fit tightly. The upper edge of the head restraint should be at eye level or higher.



### Seat belt height adjustment

Push button with relay fitting up or down. After adjustment pull the belt with a jerk to ensure that the relay fitting is properly engaged.

## Sliding/ tilting roof in passenger compartment

Press the switch with ignition turned on:

- 1 - Open
- 2 - Close/ lower
- 3 - Tilt



## Checks when filling the tank



### Opening tank flap

The filler neck is on the left-hand side of the vehicle. After opening the tank flap (see illustration) the lockable filler neck can be accessed.

### Fuel

See sticker on the inside of the tank flap.

### Tyre pressure

Please refer to the sticker on the driver's door pillar.



### Opening bonnet

Pull the bonnet release lever in the cockpit. Press the safety catch 1 in direction of arrow, open bonnet and put rod 2 in hole.

## Controls in the engine compartment



### Windscreen washer fluid container

Contents: Windscreen cleaner and water. (Anti-freeze if necessary)



### Engine oil filler opening

Refill oil in 0.5 litre portions.

Oil type acc. to VW norm: Petrol engines 500 00, 501 01 or 502 00. Diesel engines 505 00.

### Engine oil dipstick

The oil level must not be above the area a or beneath the area c:



- a do not top up oil
- b oil can be topped up
- c oil must be topped up

## Volkswagen emergency service

Should your vehicle unexpectedly break down:

**Volkswagen Emergency Assistance** 0800 - 777 192

© 1998 VOLKSWAGEN AG  
Changes of the scope of delivery in shape, equipment and technology are possible.  
No legal commitment is therefore implied by the details, illustrations and descriptions in this Quick Reference Guide. Reprinting, reproduction or translation, in whole or in part, are not permitted without written permission of VOLKSWAGEN AG. All rights are expressly reserved by VOLKSWAGEN AG. Subject to modification without notice. Produced in Germany. Concept and design: Pfeiffer Kataloge GmbH.

## Instrument and warning lamps



### 1 - Rev counter

### 2 - Warning lamps

- Airbag system fault: Contact a VW dealer!
- Trailer turn signals
- Rear fog light
- Turn signal left
- Turn signal right
- Main beam
- Glow plugs for Diesel engines
- ABS system fault: Contact a VW dealer!
- Handbrake
- Alternator
- Seat belt warning lamp
- Coolant temperature/ Coolant level
- Engine oil pressure
- Brake system
- Brake pad wear-display: Go to VW dealer!
- Fuel reserve 10 litres
- Wiper wash fluid low

### 3 - Coolant temperature

### 4 - Fuel reserve

### 5 - Speedometer

### 6 - Clock/ Multi-function indicator

- Displays - Time
- Driving time
- Average fuel consumption
- Distance driven
- Average speed
- Engine oil temperature
- Ambient temperature (on Climatronic, display in own display field)

### 7 - Setting for digital clock

### 8 - Selector lever indicator for automatic gearbox

### 9 - Display for on-board computer and navigation system

### 10 - Reset knob for trip recorder

### 11 - Mileage/ km recorder

Upper counter - total distance  
Lower counter - trip recorder

If a service is needed the Service interval display appears briefly: service OEL service INSP

If the coolant temperature, coolant level, engine oil pressure, alternator or brake system symbols light up: Stop, switch off the engine and refer to the Owner's Manual!



**1** Door lock release lever

**2** Electric windows

If you want to open the window, press the appropriate switch at the front edge. To close the window, lift the front edge of the switch.

**3** Light switch

- Off
- Side lights
- Dipped or main beam
- Front fog lights - Pull out switch in dipped beam position to 1st detent point.
- Rear fog light - Pull out switch in dipped beam position as far as it will go.

**4** Electric exterior mirrors

- L - Left exterior mirror
- R - Right exterior mirror
- Adjust mirror by pressing on the appropriate symbol.

**5** Air vents

**6** Knurled wheels for instrument lighting and headlight range

- Left knurled wheel for instrument lighting.
- Right knurled wheel for headlight range. Turn the wheel downwards to lower the headlight beam.

**7** Instruments and warning lamps  
(see reverse side)

**8** Mobile telephone with retainer

**9** Hazard warning light switch

**10** Switch for heated rear window

**11** Knurled wheel for left seat heating

**12** Knurled wheel for right seat heating

**13** Radio or navigation system with radio

## 14 Heating and ventilation/ Air conditioning

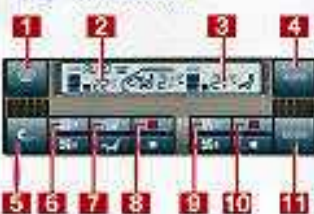


- 1 - Temperature selection for driver area
- 2 - Blower for driver area
- 3 - Air distribution
- 4 - Air recirculation mode on/off
- 5 - Air conditioning on/off
- 6 - Release for controls in rear passenger area:

The system can be adjusted separately for the passenger area and can be operated to by the passengers in the rear seats to suit their individual needs.

- 7 - Blower for passenger area ventilation
- 8 - Temperature selection for rear passenger area heating
- 9 - Blower for rear passenger area heating

## 15 Climatronic



- 1 - Defrost windscreen
- 2 - Display for driver area
- 3 - Display for rear passenger area
- 4 - Automatic operation
- 5 - Air recirculation
- 6 - Blower for driver area
- 7 - Air distribution for driver area
- 8 - Temperature selection for driver area
- 9 - Blower for rear passenger area
- 10 - Temperature selection for rear passenger area
- 11 - Cooling system off

The Climatronic can be set separately for the passenger area and can be adjusted by the passengers on the rear seats to suit their individual needs by using the controls in the side trim.

- 12 - Blower for rear passenger area
- 13 - Display for rear passenger area
- 14 - Temperature selection for rear passenger area
- 15 - Button to return to driver area settings



We recommend the following **standard setting** for all seasons: Set temperature to 22 °C and switch to automatic operation.

## 16 Stowage area

## 17 Handbrake

## 18 Automatic gearbox

Selector lever positions:

- P - Parking lock
- R - Reverse gear
- N - Neutral (idling position)
- D - Normal driving position (Gears 1-4)
- 3 - Position for "hilly" regions
- 2 - Position for steep hills
- 1 - Position for very steep hills



The selector lever can only be moved from position P and N when the brake pedal and the selector lever button A are pressed simultaneously.

## 19 Manual gearbox

Only engage the reverse gear when the vehicle is stationary.



Gear change diagram for 75 kW Diesel engine and 103 kW petrol engine.



Gear change diagram for 75 kW Diesel engine syncro and 111 kW Diesel engine.



Gear change diagram for all other engines.

## 20 Filter saturation display

## 21 Differential lock knob

## 22 Auxiliary heating



- 1 - Display
- 2 - Rotary regulator for heat output
- 3 - Button for current time and day
- 4 - Button for switch-on time and day as well as activating/deactivating the heating
- 5 - Button for heating on/off
- 6 - Button for resetting time or switch-on time, shortening of heater operation
- 7 - Button for advancing time or switch-on time, lengthening heater operation and setting pre-selected day

## 23 Ashtray

## 24 Cigarette lighter/ power socket

## 25 Pushbuttons for horn

## 26 Ignition lock



**Petrol engines**

- 1 - Ignition off/ engine off (steering wheel can be locked)
- 2 - Ignition on
- 3 - Starting engine

**Diesel engines**

- 1 - Fuel supply interrupted/ engine off (steering wheel can be locked)
- 2 - Glow and drive position
- 3 - Starting engine

As long as the driver's door is open you will hear a buzzer if you leave the lights or turn signals on after removing the ignition key.

## 27 Turn signal/ main beam

- 1 - Right turn signal
- 2 - Right parking light (ignition off)
- 3 - Headlight flasher
- 4 - Main beam on



## 28 Windscreen wiper/ washer lever

**Windscreen**

- 1 - Flick wiper
- 2 - Wiper slow
- 3 - Wiper fast
- 4 - Intermittent wiper
- 5 - Automatic wash/ wipe facility: Pull and hold lever.

**Rear window**

- 6 - Intermittent wiper: Press button
- 7 - Automatic wash/ wipe facility: Press and hold lever.



## 29 Cold starting aid

(50 and 55 kW Diesel engines only)

## 30 Bonnet release lever